

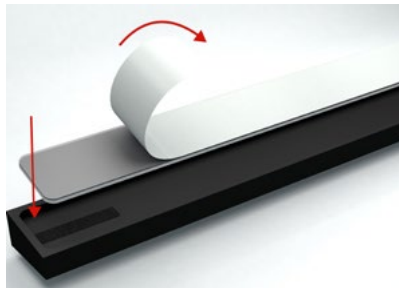
1. Download and install myGaze® software

Go to myGaze Online Shop » My account » My instant downloads
Install the software on your computer.



2. Start the myGaze® Operating Software and follow the configuration steps

3. Set up the eye tracker



a) Assemble Mounting Bracket

Put the Mounting Strip into the Mounting Bracket. Remove the cover from the adhesive strip.



b) Align Mounting Bracket

Follow software guide step by step to precisely align the Mounting Bracket to the exact middle of the lower frame of the monitor.



c) Attach myGaze n

Firmly press the Mounting Bracket against the monitor to ensure adhesion. Afterwards, connect the myGaze n to the magnetic Mounting Bracket.



d) Connect the Eye Tracker to a USB 3.0 Port

Note: usually identifiable by blue color or SS USB sign